



Electronic Referrals Release 1.0

Endpoint Specification

Version 0.2 — 15 February 2010

Release for Public Comment

National E-Health Transition Authority Ltd

Level 25

56 Pitt Street

Sydney, NSW, 2000

Australia.

www.nehta.gov.au**Disclaimer**

NEHTA makes the information and other material ('Information') in this document available in good faith but without any representation or warranty as to its accuracy or completeness. NEHTA cannot accept any responsibility for the consequences of any use of the Information. As the Information is of a general nature only, it is up to any person using or relying on the Information to ensure that it is accurate, complete and suitable for the circumstances of its use.

Document Control

This document is maintained in electronic form. The current revision of this document is located on the NEHTA Web site and is uncontrolled in printed form. It is the responsibility of the user to verify that this copy is of the latest revision.

Copyright © 2010, NEHTA.

This document contains information which is protected by copyright. All Rights Reserved. No part of this work may be reproduced or used in any form or by any means—graphic, electronic, or mechanical, including photocopying, recording, taping, or information storage and retrieval systems—without the permission of NEHTA. All copies of this document must include the copyright and other information contained on this page.

Document Information

Change History

| Version | Date | Comments |
|---------|------------|-----------------------------|
| 0.1 | 2009-10-09 | Initial draft. |
| 0.2 | 2010-02-15 | Release for public comment. |

Table of Contents

| | |
|---|------------|
| Document Information | iii |
| Change History | iii |
| Table of Contents | iv |
| Preface | 6 |
| Document Purpose | 6 |
| Intended Audience | 6 |
| Document status..... | 6 |
| References and Related Documents | 6 |
| Definitions, Acronyms and Abbreviations | 6 |
| Conformance | 6 |
| 1 Business Transaction Pattern | 7 |
| 2 Referrals Logical Interfaces | 8 |
| 2.1 Referrer Requests | 8 |
| 2.1.1 INWSReferrerRequests | 8 |
| 2.2 Referee Responses | 8 |
| 2.2.1 INWSRefereeResponses..... | 8 |
| 3 Referrals Interface Bindings | 10 |
| 3.1 SMD Interface Bindings..... | 10 |
| 3.2 Conformance | 10 |
| 3.2.1 Referrer Interfaces | 10 |
| 3.2.2 Referrer Payload Support..... | 10 |
| 3.2.3 Referee Interfaces | 11 |
| 3.2.4 Referee Payload Support | 11 |
| 4 Service Categories | 12 |
| 4.1 Referrer Service Categories | 12 |
| 4.2 Referee Service Categories | 12 |
| 4.3 Conformance | 12 |
| 4.3.1 Referee | 12 |
| Definitions | 13 |
| Shortened Terms | 13 |
| References | 14 |
| References | 14 |

This page intentionally left blank.

Preface

Document Purpose

The purpose of this document is to define the interface bindings and service categories required for implementing the Referrals Release 1.0 messaging solution using the messaging capabilities defined within the Secure Message Delivery (SMD) specification.

This document is to be read in conjunction with the Referrals Solution Design Document and the SMD specification documents listed in the references section at the end of this document.

Intended Audience

This is a technical document.

This document should be read and understood by:

- Solution Architect:
 - To understand the endpoint specifications to incorporate them into their designs.
- Developer:
 - To implement the service and/or clients which conform to the endpoint specifications.
- Tester:
 - To evaluate whether an implementation conforms to the endpoint specifications.

The reader is expected to understand XML, XML Schema, Web services, and WSDL.

Document status

This document is a draft release.

References and Related Documents

For a list of all referenced documents, see the [References](#) at the end of the document, on page 14.

Definitions, Acronyms and Abbreviations

For a list of acronyms and abbreviations, see the [Definitions section](#) at the end of the document, on page 13.

Conformance

The keywords **MUST**, **MUST NOT**, **SHOULD**, **SHOULD NOT**, and **MAY** in this document are to be interpreted as described in IETF's RFC 2119 [RFC2119].

1 Business Transaction Pattern

Figure 1 shows the logical information flows between a Referrer and a Referee for Release 1.0 of the Referrals package.

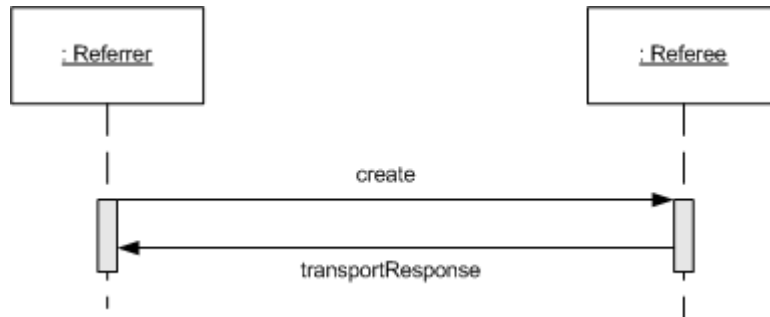


Figure 1 - Business Transaction Pattern

The referrer creates and sends a referral. The referee then sends a transport response message confirming delivery of the referral document.

2 Referrals Logical Interfaces

The following section gives an overview of the logical interfaces and methods supported by the Referrals Release 1.0 solution.

Within the context of Figure 2, the Referral System represents the local clinical information system and any other messaging components such as generic B2B gateways which may or may not be present. 3rd party messaging vendors are not shown on the diagram.

Only the outward facing interfaces (INWSRefereeResponses and INWSReferrerRequests) and there associated SMD bindings are within scope of this document.

For more details, see the Referrals Solution Design document.

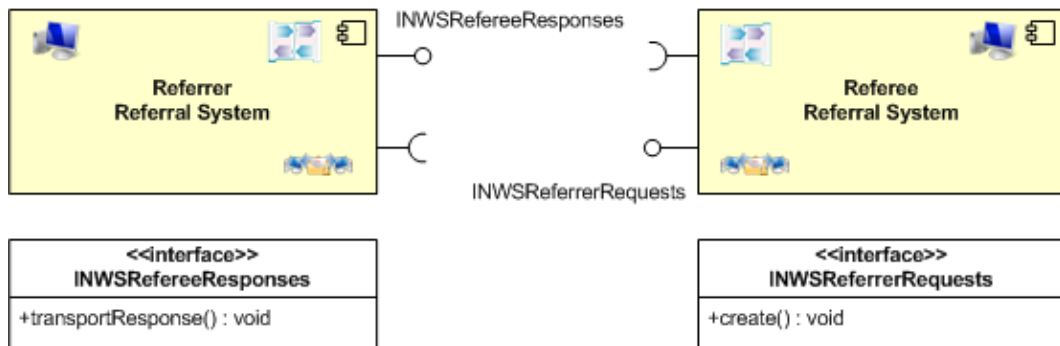


Figure 2 - Referrals Logical Interfaces

2.1 Referrer Requests

The referrer request interface defines the logical operations which are initiated by the referrer.

2.1.1 INWSReferrerRequests

The INWSReferrerRequests interface is the logical NEHTA interface between the gateway and the communicating end-point (external party). This interface will be defined within the Referrals end-point specification and use the WSP V3.1 for secure messaging.

| Operation | Description |
|-----------|--|
| create | Invoked by the referrer to create the initial referral (initiate transfer of care) request to be sent to an external provider (the referee). |

Table 1 - Referrer Requests Interface

2.2 Referee Responses

The referee response interface defines the logical operations which are initiated by the referee.

2.2.1 INWSRefereeResponses

The INWSRefereeResponses interface is the logical NEHTA interface between the gateway and the communicating end-point (external party). This interface will be defined within the Referrals end-point specification and use the WSP V3.1 for secure messaging.

| Method | Description |
|--------|-------------|
|--------|-------------|

| Method | Description |
|-------------------|--|
| transportResponse | Invoked by the referee to inform the referrer that the latest request has been delivered (but not actioned or processed by a human). The transportResponse can be automatically generated without human interaction. |

Table 2 - Referee Responses Interface

3 Referrals Interface Bindings

The following section describes the binding between the logical interfaces defined within the Referrals Solution Design document [REF-001] and the interfaces defined within the SMD specification [SMD-001].

3.1 SMD Interface Bindings

The following abbreviations refer to interfaces defined within the SMD specification.

SMGD - Sealed Message Delivery (Deferred)

SIMGD – Sealed Message Delivery (Immediate)

TRD - Transport Response Delivery

The mapping of these interfaces to the logical operations of the referral interfaces is summarised in the following tables:

| Deferred Mode (Mandatory) | | | |
|---------------------------|--------------------------|----------------------|----------------------|
| <i>Logical Interface</i> | <i>Logical Operation</i> | <i>SMD Interface</i> | <i>SMD Operation</i> |
| INWSReferrerRequests | create() | SMGD | deliver() |
| INWSRefereeResponses | transportResponse() | TRD | deliver() |

Table 3 - Deferred Mode Interface Bindings

| Immediate Mode (Optional) | | | |
|---------------------------|--------------------------|----------------------|----------------------|
| <i>Logical Interface</i> | <i>Logical Operation</i> | <i>SMD Interface</i> | <i>SMD Operation</i> |
| INWSReferrerRequests | create() | SIMGD | deliver() |
| INWSRefereeResponses | transportResponse() | - NA - | SOAP Response |

Table 4 - Immediate Mode Interface Bindings

3.2 Conformance

The following section describes conformance criteria for the Referrals Release 1.0 Package.

3.2.1 Referrer Interfaces

RFL.1 The Referrer MUST implement the SMD sender role defined in [SMD-ES].

3.2.2 Referrer Payload Support

The following conformance points identify requirements for the referral payload and the associated service categories.

RFL.2 The Referrer MUST implement the NEHTA defined HL7 CDA Message Mapping Profile for the Referrals Release 1.0 package.

RFL.3 The Referrer MAY transmit HL7 v2.4 REF I12 payloads as defined by AS4700.6-2006.

RFL.4 The Referrer MAY transmit HL7 v2.5 REF I12 payloads as defined by AS4700.6(Int)-2007.

3.2.3 Referee Interfaces

- RFL.5 The Referee MUST implement the SMD receiver role defined in [SMD-ES].

3.2.4 Referee Payload Support

The following conformance points identify requirements for the referral payload and associated service categories.

- RFL.6 The Referee MUST accept and process messages transmitted using the NEHTA defined HL7 CDA Message Mapping Profile for the Referrals Release 1.0 package.
- RFL.7 The Referee MAY accept and process messages transmitted using the HL7 v2.4 REF I12 payloads as defined by AS4700.6-2006.
- RFL.8 The Referee MAY accept and process messages transmitted using the HL7 v2.5 REF I12 payloads as defined by AS4700.6(Int)-2007.

4 Service Categories

The following section lists the service categories required for the SMD bindings defined within the previous section.

4.1 Referrer Service Categories

| Referrer Referrals Service | | |
|----------------------------|---------------------|---|
| <i>SMD Interface</i> | <i>Payload Type</i> | <i>Service Category</i> |
| TRD | - NA - | http://ns.electronichealth.net.au/Smd/Sc/TransportResponseDelivery/1.0 |

Table 5 - Referrer Service Categories

4.2 Referee Service Categories

| Referee Referrals Service | | |
|---------------------------|---------------------|---|
| <i>SMD Interface</i> | <i>Payload Type</i> | <i>Service Category</i> |
| SMGD or SIMGD | HL7 CDA | http://ns.electronichealth.net.au/eReferrals/Sc/Referral/CDA/1.0 |
| SMGD or SIMGD | HL7 v2.4 | http://ns.electronichealth.net.au/eReferrals/Sc/Referral/HL724/1.0 |
| SMGD or SIMGD | HL7 v2.5 | http://ns.electronichealth.net.au/eReferrals/Sc/Referral/HL725/1.0 |

Table 6 - Referee Service Categories

4.3 Conformance

4.3.1 Referee

- RFL.9 The Referee MUST offer an SMD SMGD interface either directly or through a Receiver Intermediary that supports service category <http://ns.electronichealth.net.au/eReferrals/Sc/Referral/CDA/1.0>
- RFL.10 The Referee MAY offer an SMD SIMGD interface either directly or through a Receiver Intermediary that supports service category <http://ns.electronichealth.net.au/eReferrals/Sc/Referral/CDA/1.0>
- RFL.11 The Referee MAY offer an SMD SMGD interface either directly or through a Receiver Intermediary that supports service category <http://ns.electronichealth.net.au/eReferrals/Sc/Referral/HL724/1.0>
- RFL.12 The Referee MAY offer an SMD SIMGD interface either directly or through a Receiver Intermediary that supports service category <http://ns.electronichealth.net.au/eReferrals/Sc/Referral/HL724/1.0>
- RFL.13 The Referee MAY offer an SMD SMGD interface either directly or through a Receiver Intermediary that supports service category <http://ns.electronichealth.net.au/eReferrals/Sc/Referral/HL725/1.0>
- RFL.14 The Referee MAY offer an SMD SIMGD interface either directly or through a Receiver Intermediary that supports service category <http://ns.electronichealth.net.au/eReferrals/Sc/Referral/HL725/1.0>

Definitions

This section explains the specialised terminology used in this document.

Shortened Terms

This table lists abbreviations and acronyms in alphabetical order.

| Term | Description |
|-------|-------------------------------------|
| SMD | Secure Message Delivery |
| XML | Extensible Markup Language |
| WSDL | Web Service Definition Language |
| IETF | Internet Engineering Task Force |
| WSP | Web Services Profile |
| SMGD | Sealed Message Delivery (Deferred) |
| SIMGD | Sealed Message Delivery (Immediate) |
| TRD | Transport Response Delivery |
| HL7 | Health Level 7 |
| CDA | Clinical Document Architecture |

References

This section lists NEHTA specifications and other documents that provide information for or about this document.

At the time of publication, the document versions indicated are valid. However, as all documents listed below are subject to revision, readers are encouraged to use the most recent versions of these documents.

References

The documents listed below are related documents that have been cited in this document.

| Reference Documents | | | |
|---------------------|--|---------------|---|
| [REF] | Document Name | Publisher | Link |
| [RFC2119] | RFC 2119: Keywords for use in RFCs to Indicate Requirement Levels | IETF 1997 | http://ietf.org/rfc/rfc2119.txt |
| [SMD-O] | Secure Message Delivery – Overview | NEHTA 2009 | |
| [SMD-TA] | Secure Message Delivery – Technical Architecture | NEHTA 2009 | |
| [SMD-ES] | Secure Message Delivery – Endpoint Specifications | NEHTA 2009 | |
| [SMD-WX] | Secure Message Delivery: Service Interface Specification WSDL and XML Schema files v1.0. | NEHTA 2009 | |